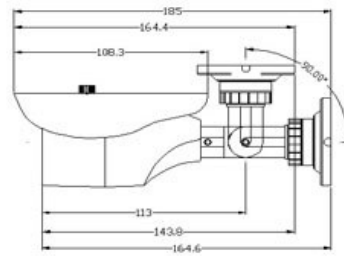
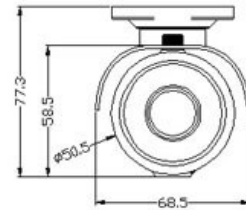


CP- VCG-ST20L2**2 MP Full HD Cosmic IR Bullet Camera - 20 Mtr.****COSMIC**
HD CAMERA**Main Features**

- 1/2.7" 2 MP HQIS Pro Image sensor
- 25/30fps @ 1080P
- Day/Night(ICR), AWB, AGC, BLC
- Plug-n-Play HD/SD Camera
- 3.6mm Lens
- Equipped with fine IR LEDs for clearer night vision
- IR Range of 20 Mtr.
- Compatible with HDx, AHD, HDCVI, CVBS and HDTVI DVRs
- IP66



CP- VCG-ST20L2

2 MP Full HD Cosmic IR Bullet Camera - 20 Mtr.

COSMIC
HD CAMERA

Feature

Image Sensor
Minimum Illumination
Shutter Speed
White Balance
Lens
Gain Control(AGC)
Back Light Compensation
S/N Ratio
Resolution
Video Output
ICR
OSD
IR
No. of IR LEDs
Operating Temperature
Humidity
Power Source
Power Consumption
Weatherproof Standard
Dimension
Weight

Specification

1/2.7" 2 MP HQIS Pro Image Sensor
Color(0.1Lux),White and Black(0.01Lux IR LED On)
1/50s(1/60s)-1/100,000s (Auto/Fixed)
Auto
3.6mm Lens
Auto
Auto
≥52dB
1080P@25 fps
1.0Vp-p Composite Output (75Ω / BNC), HD-AHD(1080P)\ HD-TVI(1080P)\ HD-CVI(1080P)\ CVBS, AHD Default setting
Support
support
IR Range of 20 Mtr.
24pcsφ5mm
-20°C~+55°C
10% ~ 90%
DC12V(+/-10%)
0.4W(2.5W after IR LED Powered on)
IP66
185mm x 68.5mm x 77.3mm
0.28 KG